

January 2010

This is the first edition of a research digest produced for the Big Lottery Fund. It includes relevant research reports from across a range of social policy and Third Sector areas of interest, which have been published in the last 6 months.

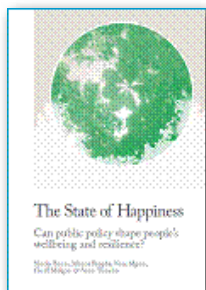


Devolution's impact on low-income people and places

January 2010 | Jim McCormick and Anne Harrop

For the tenth anniversary of Scottish and Welsh devolution, this JRF report explores trends in social and economic disadvantage as well as policy developments in four areas: housing and homelessness, employment, neighbourhood regeneration, and long-term care for older people.

[Summary](#) (20pg, PDF, 0.165)



The State of Happiness: Can public policy shape people's wellbeing and resilience

January 2010 | Nicola Bacon, Marcia Brophy, Nina Mguni, Geoff Mulgan and Anna Shandro

This report from the Young Foundation and the IDeA highlights that promoting and influencing happiness is no longer just an aspiration. As the recession forces difficult public spending choices, services focused on wellbeing are delivering widespread economic and social benefits, especially to children.

[Full report](#) (56pg, PDF, 2.08MB)



Supporting People: Case studies in effective partnership working

January 2010 | Cabinet Office: Office of the Third Sector

The OTS and the Social Exclusion Task Force have examined four examples of effective partnership working to see what worked best, what has been learned so far, and where the opportunities are now that there is greater flexibility on how money can be spent. This report looks at those groups identified as most at risk of social exclusion: care leavers, ex-offenders, mental health service users, and adults with learning disabilities.

[Key findings, case studies and further information](#) (webpage)

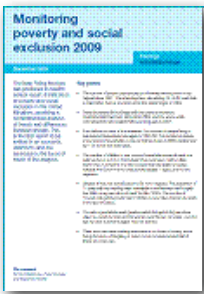


Sinking & Swimming: Understanding Britain's Unmet Needs

December 2009 | The Young Foundation

This study provides an overview of where the most acute needs are in Britain today, and which needs may become more pressing in the future. It looks at why some people can cope with shocks and setbacks and others can't, and at the implications for policy, philanthropy and public action. BIG is one of 13 funders to support this research.

[Summary](#) (28pg, PDF, 1.32MB) [Full report](#) (294pg, PDF, 4.54MB)



Monitoring poverty and social exclusion 2009

December 2009 | Tom MacInnes, Peter Kenway and Anushree Parekh

The annual report by JRF and the New Policy Institute on the state of poverty and social exclusion in the United Kingdom.

[Summary](#) (6pg, PDF, 0.282MB) [Full report](#) (116pg, PDF, 1.49MB)



Increasing the number of care leavers in 'settled, safe accommodation'

November 2009 | Mick Stein and Marian Morris

This C4EO review describes what works in increasing the number of care leavers in 'settled, safe accommodation'. It gives evidence to help service providers improve services and, ultimately, outcomes for children, young people and their families.

[Full report](#) (113pg, PDF, 0.614)

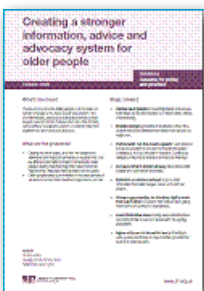


Rights of passage: Supporting disabled young people through the transition to adulthood

November 2009 | Andrew McGrath & Clare Yeowart

This NPC report looks at how disabled teenagers can make a successful transition from childhood to adulthood. The report highlights how charities are plugging gaps in government services and helping young people to lead more independent lives.

[Full report](#) (66pg, PDF, 1.38MB)

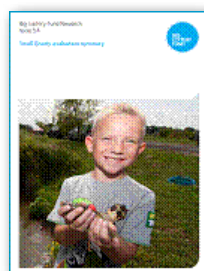


Creating a stronger information, advice and advocacy system for older people

October 2009 | Claire Horton

This JRF paper highlights recent work in Newcastle by the Quality of Life Partnership (QoLP). QoLP have developed ways of working with existing systems to make them more 'older person friendly', efficient, and effective for all concerned.

[Summary](#) (8pg, PDF, 0.09MB)



Small Grants Thematic Evaluation

March and October 2009 | Marcus Hulme

In May 2008, the Big Lottery Fund (BIG) commissioned the Policy Studies Institute to conduct a multi-methods evaluation of their small grants programme of funding. Small grants provide a lifeline for many organisations. Funders provide small grants to grass roots projects that deliver widespread benefits for people across the UK.

[Summary](#) (10pg, PDF, 0.429MB) [Final Report](#) (152pg, PDF, 0.973MB)



Getting back on track: Helping young people not in employment, education or training in England

October 2009 | John Copps and Sarah Keen

This NPC document is a guide for funders and charities to help them make informed decisions, in order to help young people make a successful transition from school to the workplace.

[Full report](#) (32pg, PDF, 0.731MB)



Work and worklessness in deprived neighbourhoods

October 2009 | Richard Crisp, Elaine Batty, Ian Cole, and David Robinson

This JRF study contrasts policy assumptions about work and worklessness with the personal experiences of residents living in deprived neighbourhoods across Britain.

[Full Report](#) (48pg, PDF, 0.572MB)



Evaluation of the New Opportunities for PE and Sport Initiative (NOPES)

February and September 2009 | Marcus Hulme and Alexandra Lee

This Big Lottery Fund summary and report reveals the findings from the evaluation of the New Opportunities for PE and Sport programme. The evaluation explored the impact of the programme on partnership, participation and wider social change.

[Summary](#) (12pg, PDF, 0.492MB) [Final Report](#) (116pg, Word, 0.716MB)



Communities in recession: The impact on deprived neighbourhoods

October 2009 | Becky Tunstall

This JRF report explores the relationship between previous and current unemployment trends. It shows which areas have been hardest hit by the recession and suggests how local authorities, community and voluntary organisations can help maintain gains and 'recession-proof' the poorest communities.

[Summary](#) (16pg, PDF, 0.213MB)



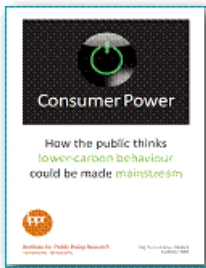
Public attitudes and behaviours towards the environment - tracker survey

September 2009 | Department for Environment, Food and Rural Affairs

This survey gives a representative picture of people in England's thoughts and behaviours across a range of environmental issues, including:

knowledge of and attitudes towards the environment; energy and water use in the home; purchasing behaviours; recycling, composting and reusing waste; food and food waste; travel behaviours and attitudes; carbon offsetting; biodiversity and green space; volunteering behaviours; and wellbeing.

[Full report](#) (91pg, PDF, 1.04MB)

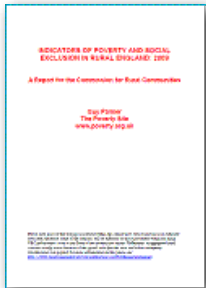


Consumer Power: How the public thinks lower-carbon behaviour could be made mainstream

September 2009 | Reg Platt and Simon Retallack

This IPPR report considers why there is a very substantial group of people who are doing very little in response to communications and policies aimed at promoting behaviours and choices that will reduce emissions.

[Full report](#) (47pg, PDF, 0.239MB)



Indicators of poverty and social exclusion in rural England: 2009

September 2009 | Guy Palmer

This CRC report presents a range of key indicators of poverty and social exclusion in rural England, in comparison with the equivalent data for urban areas. There are 37 indicators in total, grouped into seven sections focusing on low income, work, education, health, housing, services and community.

[Full report](#) (90pg, PDF, 2.05MB)



The State and the Voluntary Sector: Recent trends in Government funding and public service delivery

September 2009 | Jenny Clark, Joy Dobbs, David Kane and Karl Wilding

This NCVO paper includes:

- statistics for presenting on government funding and public service delivery by the voluntary sector
- analysis of 16 themes, including grants and contracts, social enterprise, and expenditure by central government departments
- charts and tables showing trends over time.

[Full report](#) (51pg, PDF, 3.24MB)



Key facts on the third sector

30 July 2009 | Cabinet Office: Office of the Third Sector

Facts on volunteering, charitable giving, social enterprise, civic renewal, and government support for the third sector.

[Factoids](#) (3pg, PDF, 0.082MB)



Big Thinking: What you told us

June 2009 | Big Lottery Fund

This is the report from the Big Lottery Fund's (BIG) consultation on its strategic direction from 2009-15. This was the largest consultation ever carried out by a Lottery distributor, reflecting BIG's position as a body that delivers around half of all Lottery funding to communities across the UK.

[Full Report](#) (52pg, PDF, 3.47MB)