



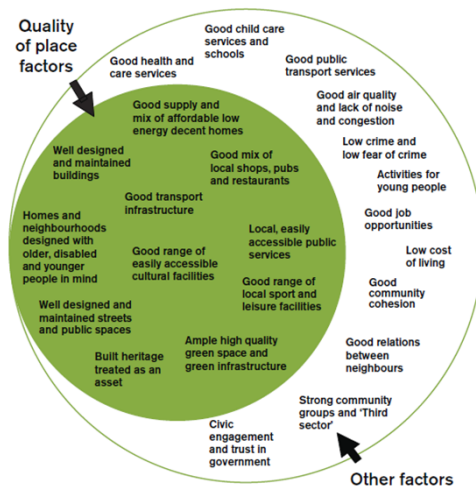
Big Lottery Fund Roundtable
Community Space and Place : a policy context

Bride Foundation, London
 12 January 2012

Peter Neal, Landscape Consultant
 peter@peternealconsulting.co.uk / 07717695290

Place – What are the ingredients

Local area factors contributing to good quality of life



Quality of place factors

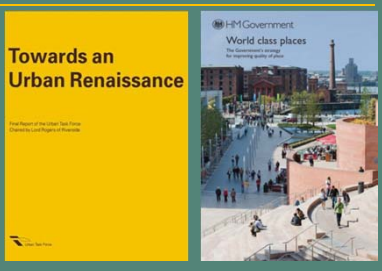
- Good child care services and schools
- Good health and care services
- Good public transport services
- Good supply and mix of affordable low energy decent homes
- Good air quality and lack of noise and congestion
- Low crime and low fear of crime
- Well designed and maintained buildings
- Good mix of local shops, pubs and restaurants
- Activities for young people
- Homes and neighbourhoods designed with older, disabled and younger people in mind
- Good transport infrastructure
- Local, easily accessible public services
- Good job opportunities
- Well designed and maintained streets and public spaces
- Good range of easily accessible cultural facilities
- Good range of local sport and leisure facilities
- Low cost of living
- Built heritage treated as an asset
- Ample high quality green space and green infrastructure
- Good relations between neighbours
- Strong community groups and 'Third sector'
- Civic engagement and trust in government

Other factors

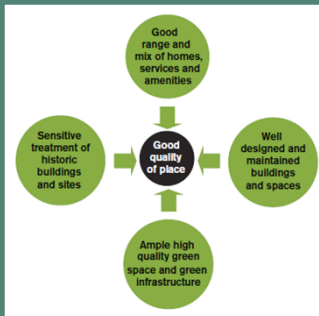
HM Government, World Class Places, 2009 p11

Towards an Urban Renaissance

HM Government
 World class places
 The Government Strategy for Improving Quality of Place

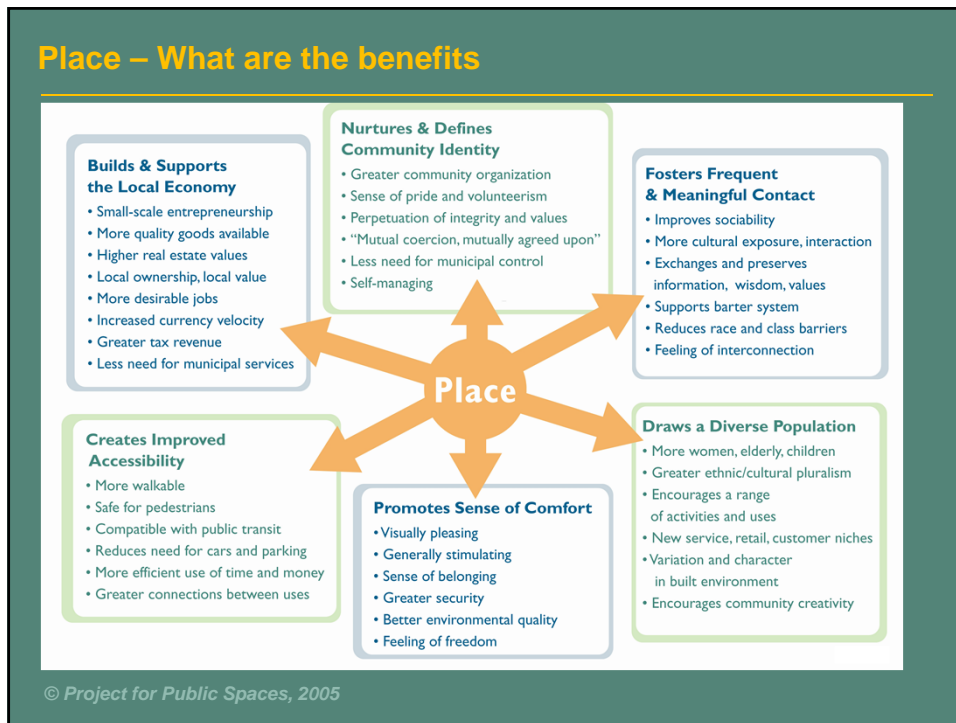


Four elements of quality of place



- Sensitive treatment of historic buildings and sites
- Good range and mix of homes, services and amenities
- Well designed and maintained buildings and spaces
- Ample high quality green space and green infrastructure





Place – Increasing emphasis on the neighbourhood

Decentralisation: giving power back to people and communities

1. Lift the burden of bureaucracy
2. Empower communities to do things their way
3. Increase local control of public finance
4. Diversify the supply of public services
5. Open up government to public scrutiny
6. Share responsibility for public services with local people

- Supporting investment and action at neighbourhood level
- Passing power and responsibility to local communities
- Working to overcome tension and conflict
- Improving skills and employment opportunities

CONTROL SHIFT
RETURNING POWER TO LOCAL COMMUNITIES

Community-led assets
Local and community groups

Big Government | Big Society

Place – Promoting heritage, arts, sport and recreation

- Conserving and protecting local cultural and historic parks and resources
- Improving accessibility and diversity of public spaces
- Integrating arts and educational opportunities
- Encouraging active and healthy communities

Place – Improving environmental performance

- Valuing and improving the services from ecosystems
- Adapting to climate change
- Working in partnership with local environmental organisations
- Adopting a green infrastructure approach to increase biodiversity, connectivity and functionality of green spaces

Place – Increasing the indicators of sustainability

Environmental performance indicators:

- Air quality
- Biodiversity
- Household waste
- Ecological footprint

Quality of life indicators:

- Employment
- Transport
- Education
- Health
- Green space

Future-proofing indicators:

- Climate change
- Local food
- Economy
- Recycling

overall ranking

	2010	2009	2008	2007
Newcastle	1	1	4	8
Luton	2	4	8	14
Brighton	3	3	2	1
Bristol	4	2	1	3
London	5	5	9	10
Leeds	6	6	13	5
Coventry	7	11	14	17
Plymouth	8	13	3	4
Edinburgh	9	7	6	2
Sheffield	10	9	7	7

www.forumforthefuture.org/project/sustainable-cities-index/overview

Place – Addressing environmental and social inequality

Research summary
Community green spaces: local leaders to tackle inequality and improve health

Decent homes need decent spaces
An action plan to improve open spaces in social housing areas

Figure 2: Neighbourhood satisfaction and deprivation

Figure 3: Quantity and type of green space and area deprivation

NATIONAL HOUSING FEDERATION

Place – What support do communities value



Community resources

- Shared responsibilities
- Building partnerships
- Flexible funding
- Adequate time
- Professional & technical skills
- Appropriate standards
- Guidance and examples
- Recognition and awards

Union Street Urban Orchard, Bankside Urban Forest, 2010



www.unionstreetorchard.org.uk/ / photo credit: Mike Massaro